



# technology medicine™

Committed to providing today's  
technology to doctors and patients,  
improving clinical outcomes, patient  
comfort and return on investment.

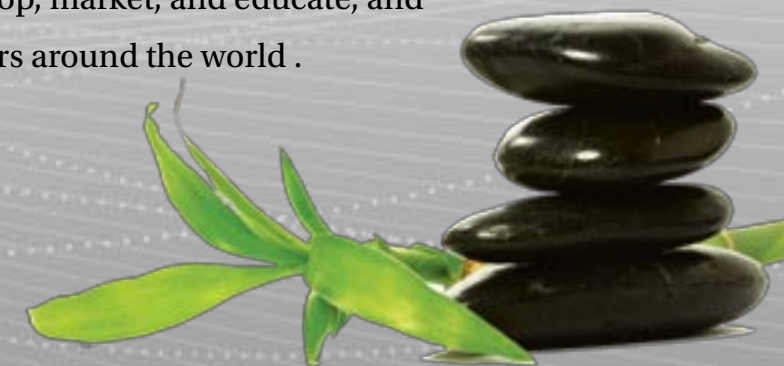


# Lasers<sup>4</sup>Dentistry™

a division of Technology<sup>4</sup>Medicine, LLC

Lasers4Dentistry represents Technology4Medicine's focus to continue to advance dentistry with the ever progressing capabilities of lasers. Technology4Medicine believes that lasers have just begun to realize their true potential in dentistry. The available laser wavelengths, laser mediums and characteristics continues to grow. This is great news for both the providers and the patients. Lasers can improve clinical outcomes, allow the dentist and hygienists to do new procedures, be more efficient, grow practice revenues and improve patient comfort.

The founder and executives of Lasers4dentistry are foremost experts in laser dentistry. They lead the world dental laser market to develop, market, and educate, and thus dramatically increase the use of dental lasers around the world .



## Introducing the FOX™ Diode Laser

The ultimate lasing machine with quality and attention to detail.

- **Sophisticated functions**, give you what you want, from simple to all the details.
- **You are in control**: Watts, joules, accumulated joules, pulse counter, plus precision settings for pulse durations and intervals — from 1 millisecond to continuous.
- **Superb engineering** — German precision, more power... and battery operated.
- SHA laser aperture, super tough high tech precision ceramic laser aperture with safety window and dust protection.
- Low cost fiber — **Lower cost per patient**, better ROI.
- As small as small gets, and still solid on the counter.
- BMW-style controller, one cool knob does it all.

### Get The Wavelength You Need and Settings You Want — Even if it's Unreasonable.

Don't be short changed by the limitations of other companies. As a leader in Laser Dentistry, Lasers4Dentistry™ from Technology4Medicine™ and ARC offer you more diode wavelengths, with precision pulses control from 1 millisecond to continuous. Control with simple, one-touch presets, or set your own preferences, the choice is yours.

Even the smallest details are at your command:

- Aiming beam intensity
- Pulse aiming beam at the rate you prefer, for enhanced visibility and increased contrast to target tissue
- Audible laser fire tone choice and volume control button programmability
- Screen brightness, contrast and more

### Low Cost Fiber — Lower Cost per Patient, Better ROI

Want low cost, fibers? Technology4Medicine delivers. FOX complete replacement fibers are the industry low cost leaders, at less than \$100, translating to less than \$1 per procedure, depending on technique.

### More Applications and Accessories

With a snap in and out delivery system, you can use a variety of delivery systems designed for your FOX, expanding what you can do for your patients, increasing efficiency and patient satisfaction.

The FOX is the ultimate diode for your practice.



Lasers4Dentistry™ is Proud to Bring Another Major Advancement to Laser Dentistry — Introducing the

# 1064nm FOX™ Diode Laser.

Superbly packaged in the great little FOX™, the 1064nm diode is **small, user friendly, yet sophisticated with advanced capabilities**. The 1064nm wavelength has a rich history in dental lasers, but previously limited to the Nd:YAG crystal as the laser medium. The new FOX diode 1064 eliminated the need for the older crystal technology to produce the wavelength. The new advanced diode 1064 is much smaller, more efficient, extremely reliable and has new capabilities. Longer pulse durations are at the click of the dial, (1 ms, 2 ms... 50... or just go to continuous), and presets will give you **one touch complete settings**.

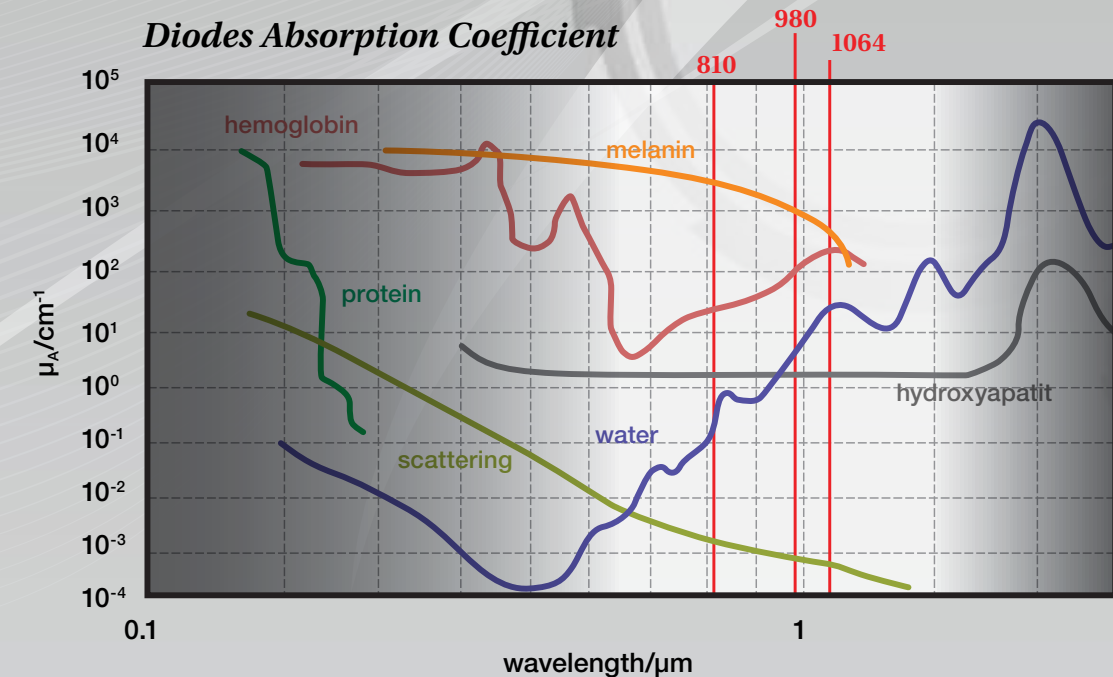
Also available:

## 810nm Fox™ Diode Laser.

The 810nm diode wavelength is well established as a great tool in dentistry. The 810nm diode was readily available in other fields, and later became commercialized for dentistry. Because of the availability, it has since been widely used and published. The 810 has many experienced users, and is the preferred diode for many dentists and hygienists around the world.

## 980nm Fox™ Diode Laser.

The 980nm diode is also well established in dentistry. The absorption characteristics indicate the wavelength is more highly absorbed in key clinical soft target tissues (target chromophores). The 980 is an efficient cutter, coagulates well, and with an incredible 9 watts, is a great tool to add to your practice for today's dentistry. This FOX laser system will be there for you as you and laser dentistry continue to advance and progress.



### Very Broad Base Clinical Applications

The FOX diode is intended to be used for ablation, vaporization, excision, incision, hemostasis, or coagulation of soft tissue. The advanced FOX system is also FDA cleared for expanded field of medical specialties, including dermatology, gastroenterology<sup>1</sup>, general surgery, neurosurgery, otolaryngology, ophthalmology, pulmonology, genitourinary<sup>2</sup>, gynecology<sup>3</sup>, orthopedics<sup>2</sup> and thoracic surgery<sup>2</sup>

<sup>1</sup>810nm and 1064nm only. <sup>2</sup>980 and 1064nm only. <sup>3</sup>980nm only.

### Specifications

Diode/Wavelength	Output Power
FOX 810nm	min. 6 Watt
FOX 980nm	min. 9 Watt
FOX 1064nm	min. 7 Watt

#### Technical Data

Laser	Diode Laser
Pulse Length	1ms to CW
Pulse Interval	4ms to SP
Power Supply	Battery, Power Supply: 110-230Volt
Weight	1.2 kg

Technical specifications subject to change



A Review

## Today's Diode in Laser Dentistry.

Thousands of dentists around the world use diode lasers everyday in their practices for many procedures, including:

**Laser Troughing** Packing retraction cord is often frustrating, unpredictable and time-consuming. Laser troughing can help you get clean, bloodless, high quality impressions the first time around.

**Laser Soft Tissue Crown Lengthening** Allows you to remove excess tissue without a scalpel, sutures or bleeding to obtain immediate impressions for crown and bridge procedures and cosmetic procedures. Typically there is less need for post operative pain medication making the procedure more comfortable for your patients.

**Laser Gingivectomy** Used for general cosmetic purposes and also for impressions for cosmetic and crown and bridge procedures. Excess tissue can be quickly and predictably contoured without bleeding, reduced post-operative pain and medications when compared to scalpels and sutures.

**Gingivectomy for Class V Restorations** Can provide a bloodless, quick and easy method to access sub-gingival decay.

**Laser Sulcular Debridement and Curettage** Used as an adjunct to traditional scaling and root planning in order to reduce pocket depths.

**Laser Implant Recovery** Allows you to perform fast, bloodless and safe removal of excessive gingival tissue around the implant prior to seating the implant.

**Laser Frenectomy** Allows for bloodless, scalpel and suture-free release of maxillary or mandibular frenums.

### Typical dental procedures performed with many diode lasers:

- Excisional and incisional biopsies
- Exposure of unerupted teeth
- Fibroma removal
- Frenectomy
- Frenotomy
- Gingival troughing for crown impression
- Gingivectomy
- Gingivoplasty
- Gingival incision and excision
- Hemostasis and coagulation
- Implant recovery
- Incision and drainage of abscess
- Laser removal of diseased, infected, inflamed and necrosed soft tissue within the periodontal pocket
- Laser soft tissue curettage
- Leukoplakia
- Operculectomy
- Oral papillectomies
- Pulpotomy
- Pulpotomy as an adjunct to root canal therapy
- Reduction of gingival hypertrophy
- Soft tissue crown lengthening
- Sulcular debridement (removal of diseased, infected, inflamed and necrosed soft tissue in the periodontal pocket to improve clinical indices including gingival index, gingival bleeding index, probe depth, attachment loss and tooth mobility).
- Treatment of canker sores, herpetic and aphthous ulcers of the oral mucosa.
- Vestibuloplasty

### Return on Investment

Implementing a diode laser into your practice will expand the procedures you offer your patients while providing them with a higher quality of care and comfort. While your practice is unique, the following table demonstrates the significant positive financial impact a diode laser can have on your bottom line.

Sample diode laser ROI:

Treatment	#	Month
Gingival Recontouring	3	\$480.00
Incision/drainage of abscess	2	\$310.00
Frenectomy	1	\$319.00
Biopsy Fibroma	1	\$201.00
Operculum Release	1	\$341.00
Destruction of Lesion	2	\$100.00
Aphthous Ulcer	2	\$100.00
Sulcular Debridement, Quad	3	\$1,125.00
Cervical Sensitivity	2	\$100.00
Total	17	\$3,076.00
Monthly Lease		\$350.00
Monthly Profit		\$2,726.00
<b>Annual Profit</b>		<b>\$32,712.00</b>

# SupraPulse CO<sub>2</sub>™

## The next generation in ultra advanced laser dentistry.

- Proven and established for dentistry
- Ultra fast soft tissue cutting
- Charless cutting
- The choice for oral surgery
- Unsurpassed efficiency

*Pending FDA clearance at time of publishing.*

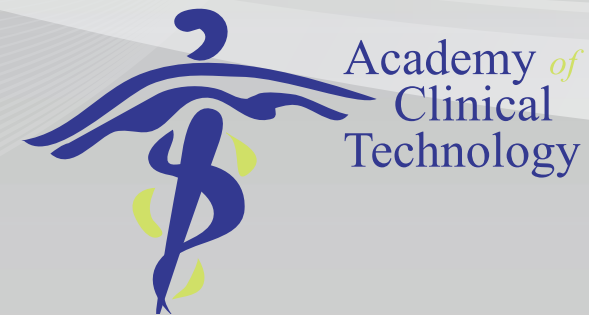


# Technology Therapy™

from Technology4Medicine, LLC

Lasers and light have been used for therapy around the world for many years. Referred to as Low Level Laser Therapy (LLLT), PhotoBioModulation, (PBM), or just laser therapy. Recently this technology for medicine has dramatically advanced, and has been cleared by the FDA for many applications related to healing, pain reduction and helping patients in many ways.

Technology4Medicine™ is committed to offering you the right laser technology for the needs of your practice. When you turn a therapy laser on, it can make you feel better.



## Academy of Clinical Technology™ (ACT)

### Get the best support for your dental laser.

ACT is committed to ensuring that health care providers have the education and coaching needed to more fully integrate technology. Leading technologies are often under utilized, due primarily to ineffective, or lack of, training and mentoring. The ACT technology coaches are committed to providing you the opportunity to have a Personal Laser Coach, someone to be there for you, before and after your training sessions. It takes more than a course to truly adopt and utilize the technologies your practice and patients want. Technology will continue to advance medicine, and our goal is to ensure you are not left behind. Be a leader with ACT.





## Management History

Founded by Jeffrey Jones and Keith Bateman, former senior executives of Biolase Technology, Inc. (BLTI), Technology4Medicine™ offers a broad range of advanced technology and laser-based products focused on enhancing the quality of clinical care, the patient experience and the bottom line of dental, medical and therapy communities.

Dentists face unique challenges, both clinically and financially. With over 40 years of combined experience in the technology, medical and dental laser markets, Technology4Medicine and its divisions can help dentists and other medical practitioners to achieve their goals.

## Contacts

E-mail: [knelson@t4med.com](mailto:knelson@t4med.com)  
PO Box 75735, San Clemente, CA 92673  
Phone: 949.374.9873 or 801.266.1970  
Fax: 949.361.6698